

Rook Fire Table (Rectangle)

neighbor



Description

Hand cast with glass fiber reinforced concrete, our Rook Fire Table brings the heat. Incredibly warm and highly durable, its sculptural linear design and lava rocks encourages gathering, day or night. Professional installation is required. Available for use with propane or natural gas.

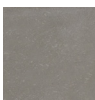
Materials & Specifications

- Glass fiber reinforced concrete
- FSC-Certified teak. Kiln-dried for extra durability
- Lava rock
- Burner assembly with key valve
- Max BTU: 65,000
- California Residents see [Prop 65 Warning](#)

Other

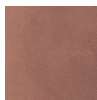
[Care and maintenance information](#)
[Limited warranty](#)

Finishes



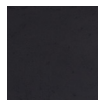
Stone
Natural Gas
FT-SET-STONE-
NG-2

Propane
FT-SET-STONE-
LP-2



Canyon
Natural Gas
FT-SET-CANYON-
NG-2

Propane
FT-SET-CANYON-
LP-2



Charcoal
Natural Gas
FT-SET-CHARCOAL-
NG-2

Propane
FT-SET-CHARCOAL-
LP-2



Ash
Natural Gas
FT-SET-ASH-
NG-2

Propane
FT-SET-ASH-
LP-2

Dimensions

Fire Table
Width: 60"
Height: 14.5"
Depth: 32"
Ground clearance: 4"
Lip width: 6.75"
Weight: 400 lbs

Propane Tank Cover
Cover Width: 15.5"
Cover Height: 21"
Hose Length: 91"
Weight: 52 lbs

