

# Rook Fire Table - 48"

neighbor



## Description

Hand cast with glass fiber reinforced concrete, our Rook Fire Table brings the heat. Incredibly warm and highly durable, its sculptural linear design and lava rocks encourages gathering, day or night. Professional installation is required. Available for use with propane or natural gas.

## Materials & Specifications

- Glass fiber reinforced concrete
- FSC-Certified teak. Kiln-dried for extra durability
- Lava rock
- Burner assembly with key valve
- Max BTU: 65,000
- California Residents see [Prop 65 Warning](#)

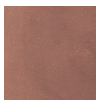
## Other

[Care and maintenance information](#)  
[Limited warranty](#)

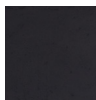
## Finishes



**Stone**  
Natural Gas  
FT-SET-STONE-  
NG-3  
Propane  
FT-SET-STONE-  
LP-3



**Canyon**  
Natural Gas  
FT-SET-CANYON-  
NG-3  
Propane  
FT-SET-CANYON-  
LP-3



**Charcoal**  
Natural Gas  
FT-SET-CHARCOAL-  
NG-3  
Propane  
FT-SET-CHARCOAL-  
LP-3



**Ash**  
Natural Gas  
FT-SET-ASH-  
NG-3  
Propane  
FT-SET-ASH-  
LP-3

## Dimensions

**Fire Table**  
Width: 48"  
Height: 14.5"  
Ground clearance: 4"  
Weight: 400 lbs

**Propane Tank Cover**  
Cover Width: 15.5"  
Cover Height: 21"  
Hose Length: 91"  
Weight: 52 lbs

