

Camber Sofa

neighbor



Description

Made to stay a while. The Camber Outdoor Sofa balances minimal and clean lines with soft, weather-ready materials—powder-coated aluminum, woven wicker, and plush Sunbrella® cushions built to last.

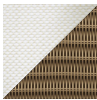
Materials & Specifications

- Powder-coated aluminum frame
- Handwoven all-weather synthetic wicker
- Quick-dry reticulated foam seat cushions
- Fiber-filled back cushions
- Sunbrella® fabric covers
- Stainless steel hardware
- Nylon glides
- California Residents see [Prop 65 Warning](#)

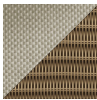
Finishes

COM/Customization: available upon request

Fabrics



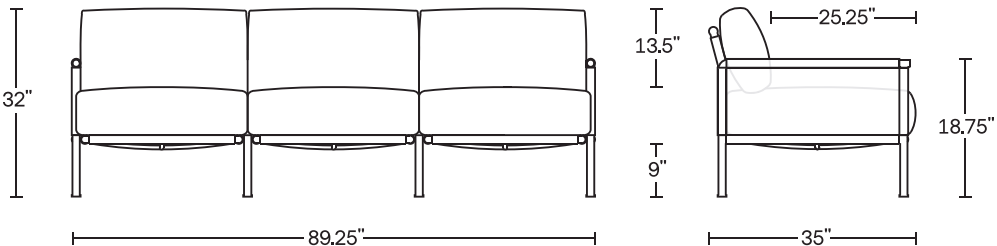
Sunbrella Restored Shell
CAMB-SOFA-SH-1



Sunbrella Restored Dune
CAMB-SOFA-DU-1

Dimensions

Weight: 115 lbs
Width: 89.25"
Depth: 35"
Height: 32"
Seat height: 18.75"
Seat depth: 25.25"
Seat cushion thickness: 7.25"
Back cushion height: 19"
Ground clearance: 9"



Other

[Care and maintenance information](#)

[Limited warranty](#)

Camber Collection

neighbor

Modules & accessories



Left Module



Right Module



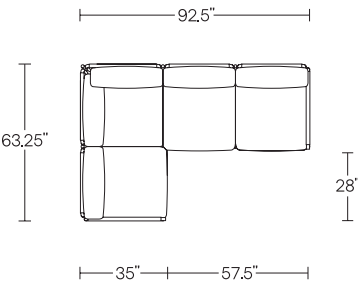
Armless Module



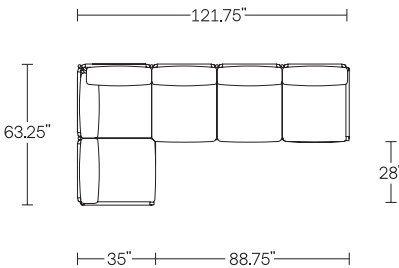
Corner Module

Popular sectional configurations

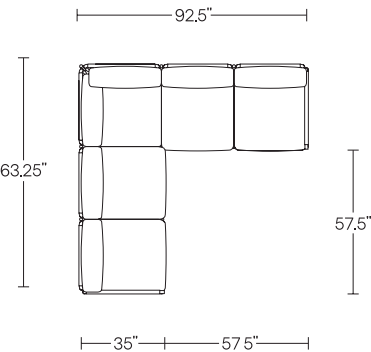
4-Piece Sectional



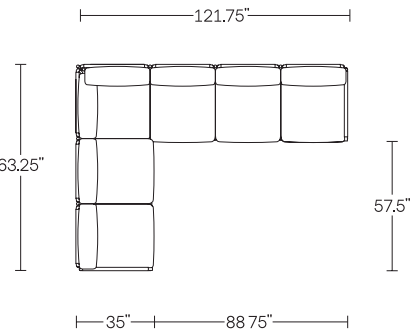
5-Piece Sectional



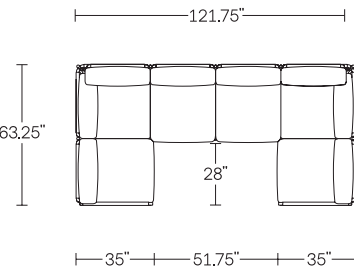
5-Piece
Symmetrical Sectional



6-Piece Sectional



6-Piece U-Shaped Sectional



6-Piece U-Shaped Sectional

