

Camber Chaise Lounge Chair

neighbor



Description

Soft where it counts. Strong where it matters. The Camber Chair is defined by a clean powder-coated frame wrapped in woven synthetic wicker designed for the outdoors. Quick-dry cushions are soft and finished in washable Sunbrella® fabric—because looking good shouldn't be high-maintenance.

Materials & Specifications

- Powder-coated aluminum frame
- Handwoven all-weather synthetic wicker
- Quick-dry reticulated foam seat cushions
- Fiber-filled back cushions
- Sunbrella® fabric covers
- Stainless steel hardware
- Nylon glides
- California Residents see [Prop 65 Warning](#)

Finishes

COM/Customization: available upon request

Fabrics



Sunbrella Restored Shell
CAMB-SL-SH-1



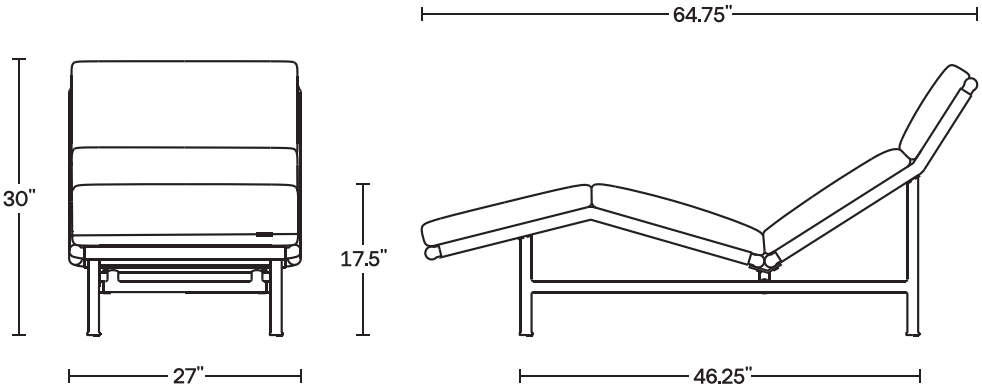
Sunbrella Restored Dune
CAMB-SL-DU-1

Dimensions

Weight: 42 lbs
Width: 27"
Depth: 64.75"
Height: 30"
Seat height: 17.5"

Other

[Care and maintenance information](#)
[Limited warranty](#)



Camber Collection

neighbor

Modules & accessories



Left Module



Right Module



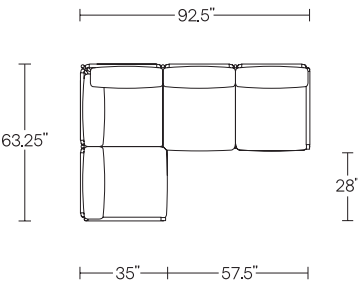
Armless Module



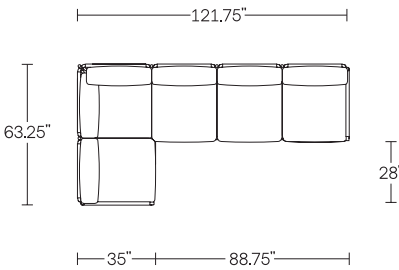
Corner Module

Popular sectional configurations

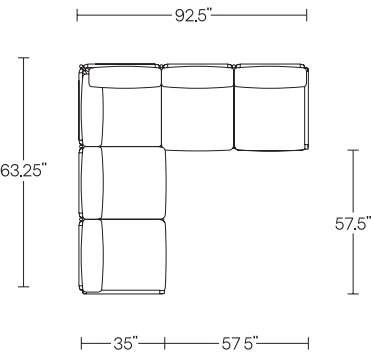
4-Piece Sectional



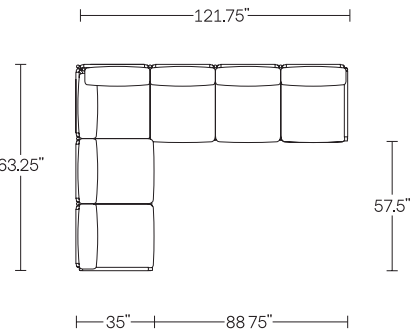
5-Piece Sectional



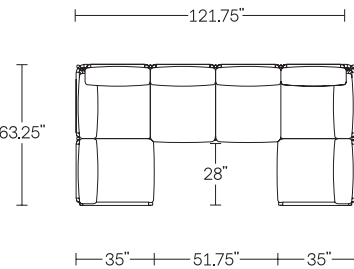
5-Piece
Symmetrical Sectional



6-Piece Sectional



6-Piece U-Shaped Sectional



6-Piece U-Shaped Sectional

